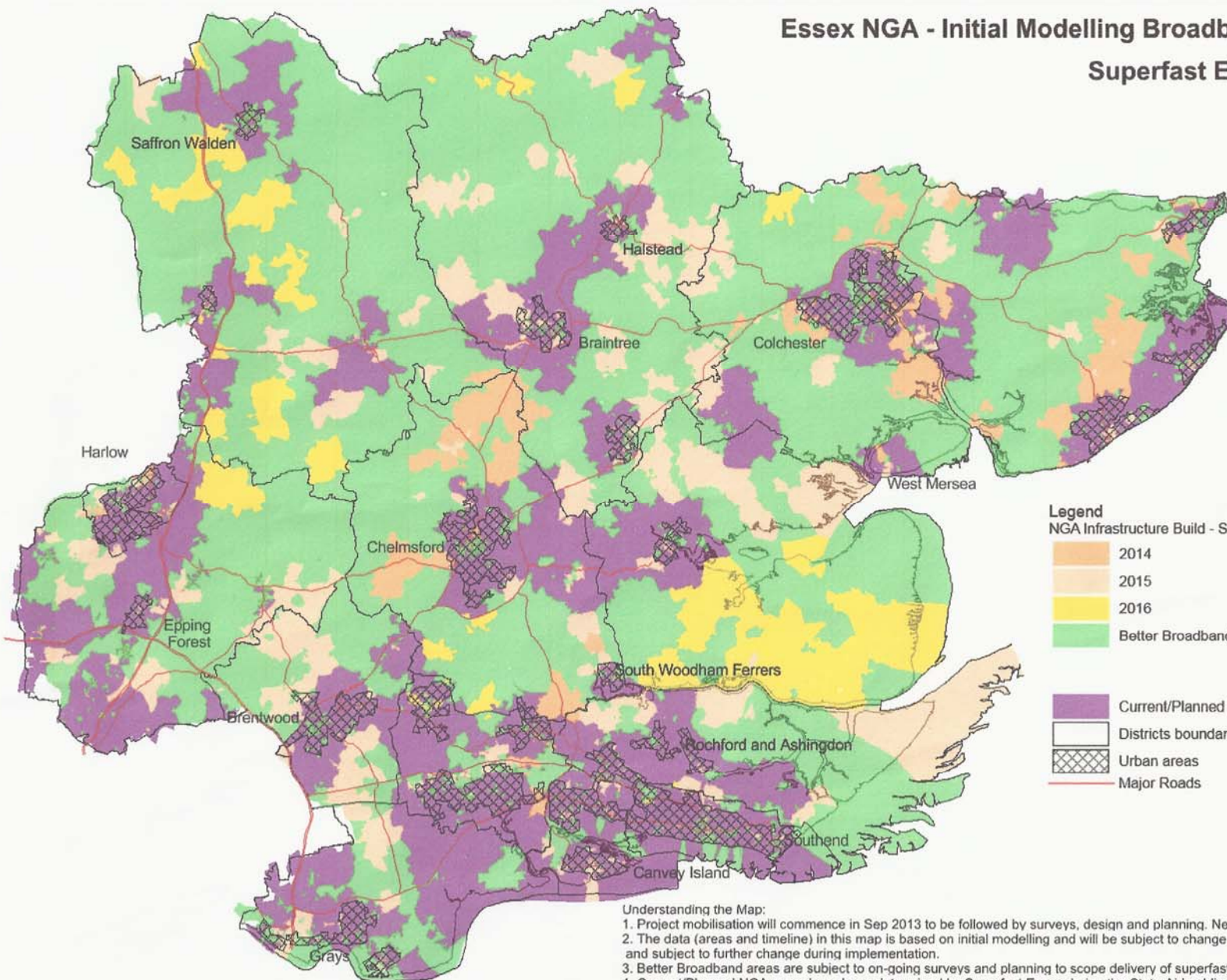


Essex NGA - Initial Modelling Broadband Roll Out Map

Superfast Essex Programme



Legend
 NGA Infrastructure Build - Superfast Essex Programme

- 2014
- 2015
- 2016
- Better Broadband (2Mb – 24Mb)

- Current/Planned (Private Network providers)
- Districts boundaries
- Urban areas
- Major Roads

Version 4g
 NGAi Intelligence Team
 Date: 23th September 2013

Understanding the Map:

1. Project mobilisation will commence in Sep 2013 to be followed by surveys, design and planning. Network roll-out will commence 2014
2. The data (areas and timeline) in this map is based on initial modelling and will be subject to change during surveys, design and planning, and subject to further change during implementation.
3. Better Broadband areas are subject to on-going surveys and planning to scope delivery of superfast broadband
4. Current/Planned NGA areas have been determined by Superfast Essex during the State Aid public consultation (Mar/Apr 2013). These areas are subject change